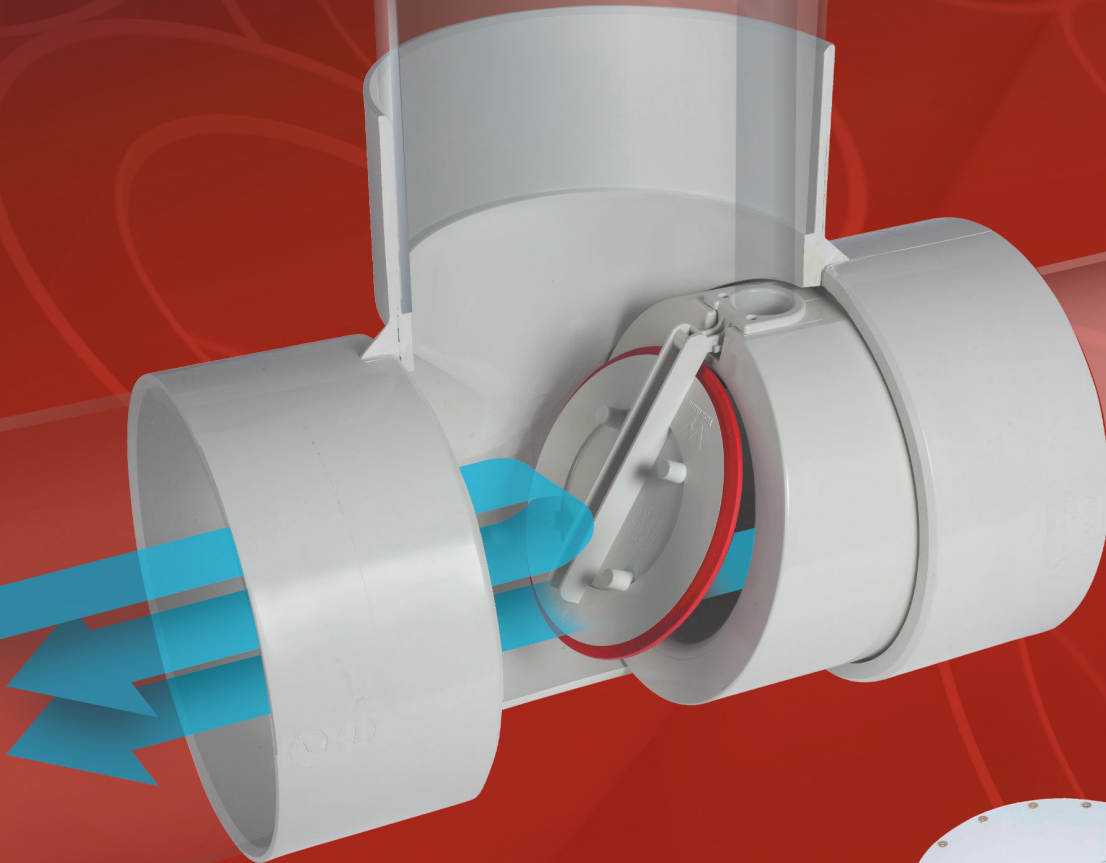
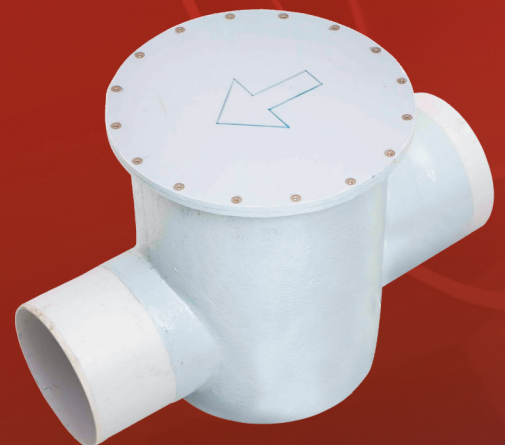


REFLUX VALVES



**150mm
Reflux Valve**



**Fabricated
Reflux Valve**

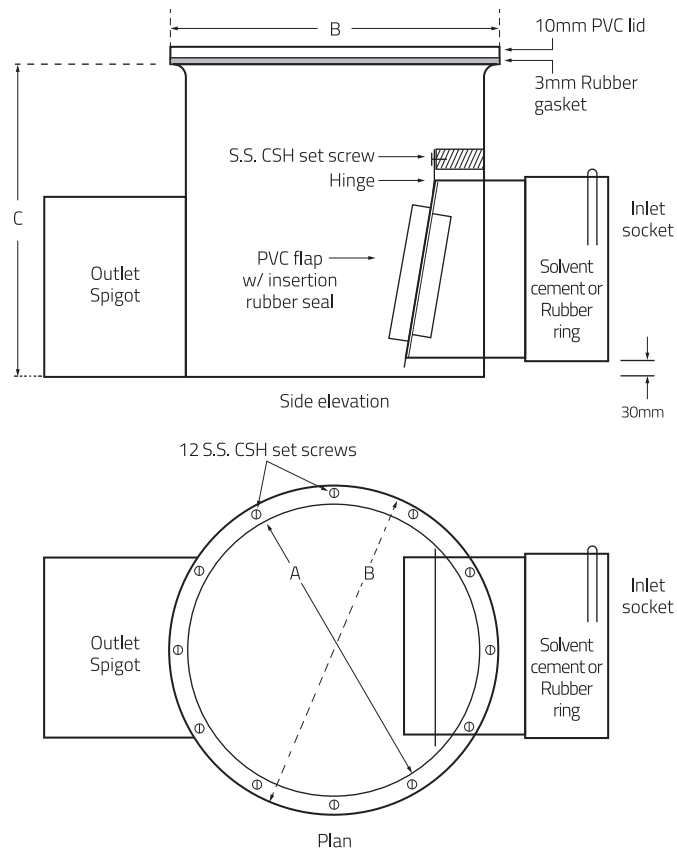
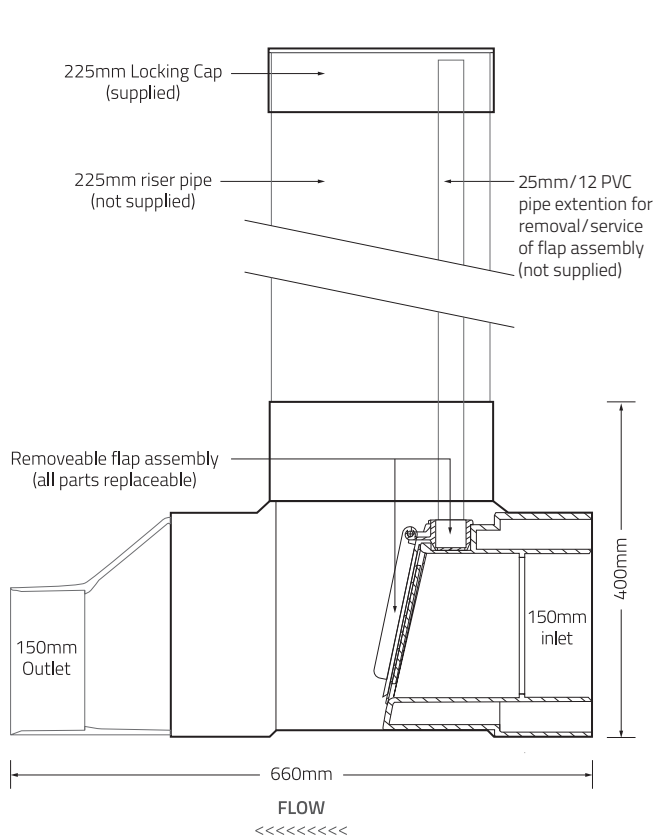
*PVCplumbing*FITTINGS

150MM REFLUX VALVE

The Aymroo 150mm PVC serviceable Reflux Valve has been designed for installation underground where maintenance from ground level is required. This valve suits a larger residential location or a smaller commercial install where existing valves may be too small or restrictive. The entire flap mechanism is removable to the surface where cleaning and/or replacement of parts is a much easier operation. All serviceable parts are available for purchase if needed to be replaced.

FABRICATED REFLUX VALVE

Aymroo Fabricated Reflux Valves are available in larger sizes, 225mm and 300mm. These are based on a 375mm main body which has a bolted lid for removal in case maintenance is required. These valves need to be installed into a brick or concrete pit with access ladder if installed underground.



AYMROO SERVICEABLE 150MM REFLUX VALVE

INSTALLATION INSTRUCTIONS

- Cut 225mm DWV riser pipe to length required for installation of Reflux Valve
- Cut 25mm cl.12 extension pipe 50mm longer than riser pipe
- Solvent weld 225mm riser pipe into top of Reflux Valve
- Solvent weld 25mm extension pipe into 'flap plug'
- Solvent weld Aymroo locking cap onto riser pipe
- Connect inlet and outlet pipes to Reflux Valve

AYMROO FABRICATED REFLUX VALVE

DIMENSIONS

NOM DIAM.	A	B	C	WEIGHT APROX.
225mm	375mm Ø	480mm Ø	520mm Ø	12 kgs.
300mm	375mm Ø	480mm Ø	550mm Ø	12 kgs

NOTES

- 150mm Reflux Valve comprises all moulded components
- 225mm and 300mm Reflux Valves comprise of fabricated pipe components
- Adaptors to RRJ available on request
- Replacement parts available for all Reflux Valves



All Reflux Valves meet WMTS-006:2014
Watermark certificate WM74828

Agents

Aymroo
INNOVATE | CREATE | CONNECTProducts

Aymroo Head Office 30 York Road, Ingleburn NSW 2565
tel: 1300 057 588 fax: 1300 052 857 | aymroo.com.au